

**18th EUROPEAN WEEK of
REGIONS and CITIES**

05>09 OCTOBER 2020

12>16 OCTOBER 2020

19>22 OCTOBER 2020

Funding opportunities for SMEs in Bucharest-Ilfov region 2021-2027

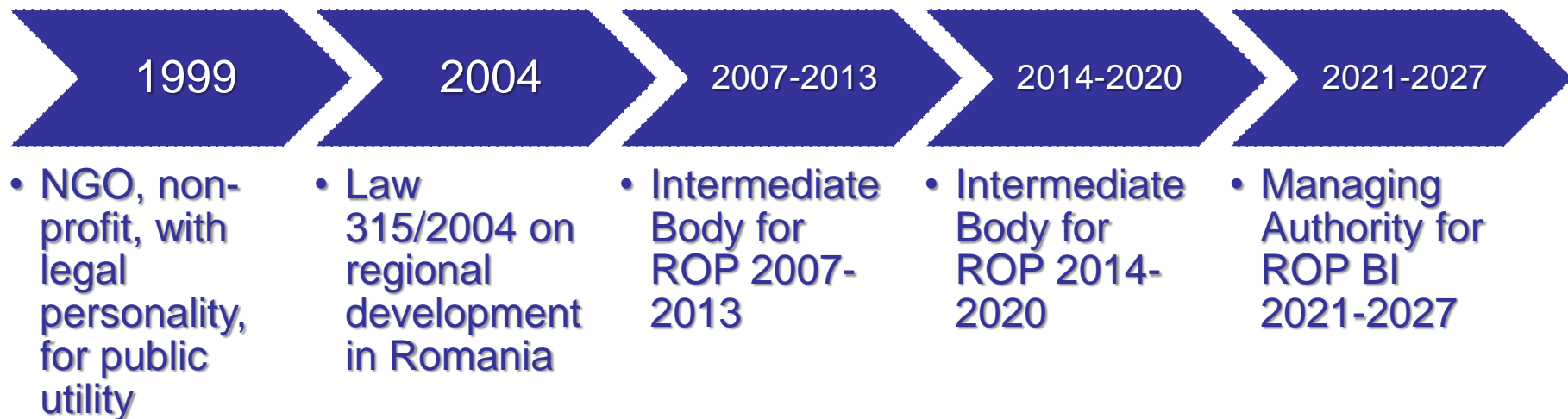
BUCHAREST
21.10.2020



Agencia pentru Dezvoltare Regională
București - Ilfov



Bucharest-Ilfov Regional Development Agency



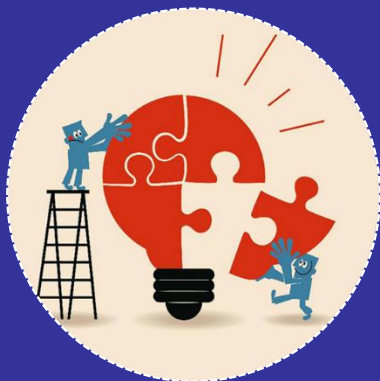
Bucharest-Ilfov Region - The most developed region of RO



Population:
2.551.740 person
Bucharest - 83%

Density: 1400
inhab/km2
Bucharest - 8 840
inhab/km2

High urbanization
rate 90.6%



BI is a Moderate Innovator

99.5% of the total number
of active enterprises is
represented by SMEs

24% of the total number of
innovative enterprises

55% of the total number of
employees in the CD

65% of the total expenses
from the R&D activity



**27% from national
GDP is from BI**

GDP BI (euro/inhab)
24.200 (RO 10.500,
EU 30.200)

GDP BI (pps/inhab)
45.900 (RO 19.900,
EU 30.200)

**GDP BI (pps/inhab %
EU average) 151%
(RO 66%)**



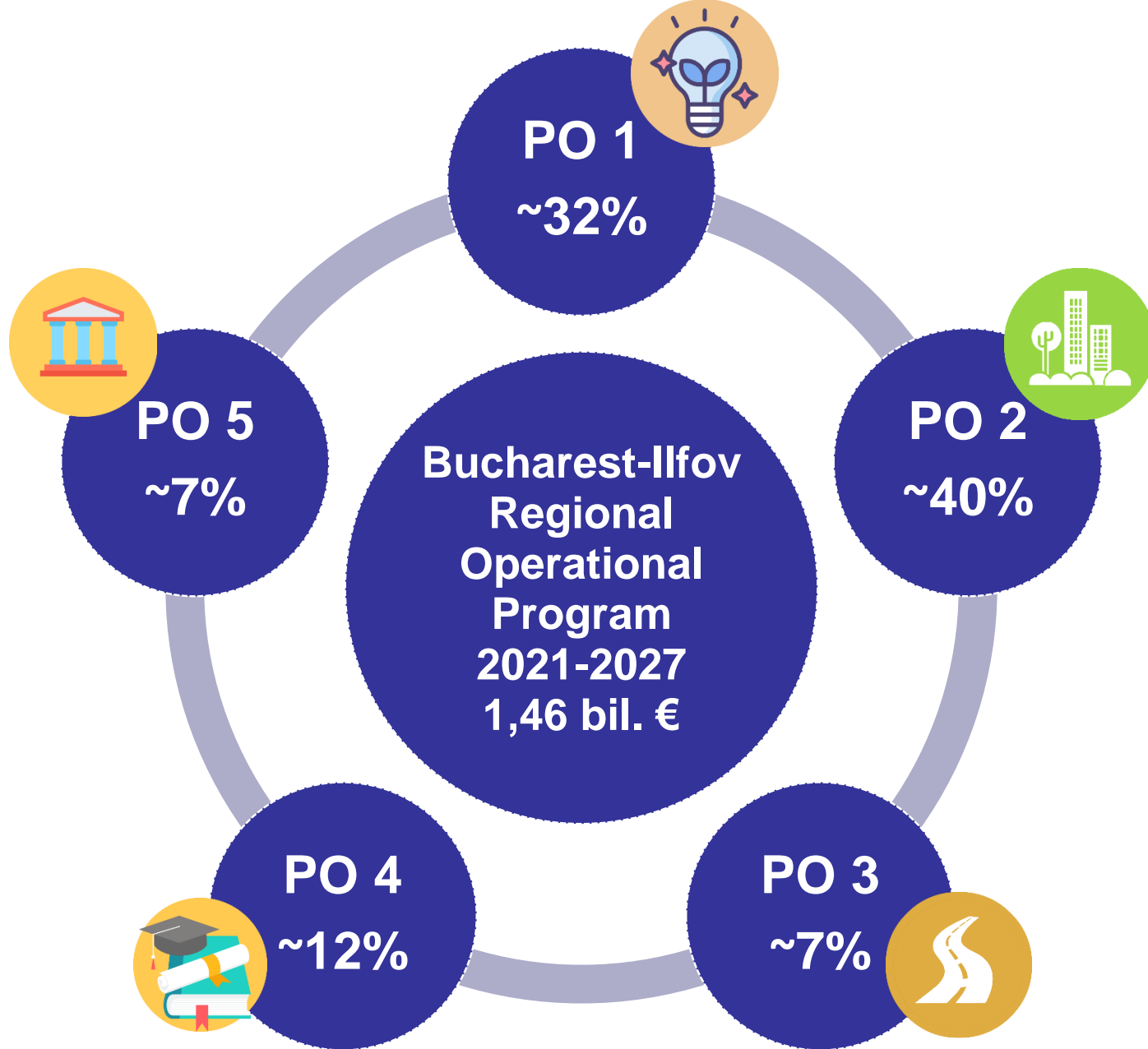
Unemployment rate 2,5%
(RO 3,9%, EU 6,7%)

**Population aged 25-64
with tertiary education
40%** (RO 19%, EU 31%)

**People at risk of poverty
or social exclusion 14%**
(RO 31%, EU 21%)

**Severe material
deprivation rate 11%**
(RO 14,5%, EU 6%)

Bucharest-Ilfov Regional Operational Program 2021-2027



**Bucharest-Ilfov
Regional Operational Program
2021-2027**

**Priority 1 - A competitive region through
innovation, digitalisation and dynamic
enterprises (PO 1)**

Type of interventions/Form of support



Supporting innovation in SMEs by investing in their own research/ innovation infrastructures/ departments (De Minimis Aid/ Financial instruments*)



Supporting innovative start-ups / spin-offs (De Minimis Aid)



Supporting innovation and technology transfer entities for the benefit of SMEs (De Minimis Aid/State Aid)



Supporting innovation in public RDI organizations, higher education institutions, in the interest of SMEs (State Aid)



Supporting innovation clusters to increase competitiveness and innovation in SMEs (State Aid)

Type of interventions/Form of Support



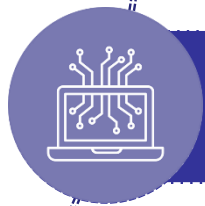
Supporting SMEs in developing & implementing new business models for internationalization (Financial Instruments*)



Support micro-enterprises to increase their resilience in the market on medium and long term (De minimis Aid)



Support entrepreneurship through business incubators/ accelerators & industrial parks (State Aid)



Support for the digital transformation of SMEs, including digital innovation hubs (De minimis Aid)

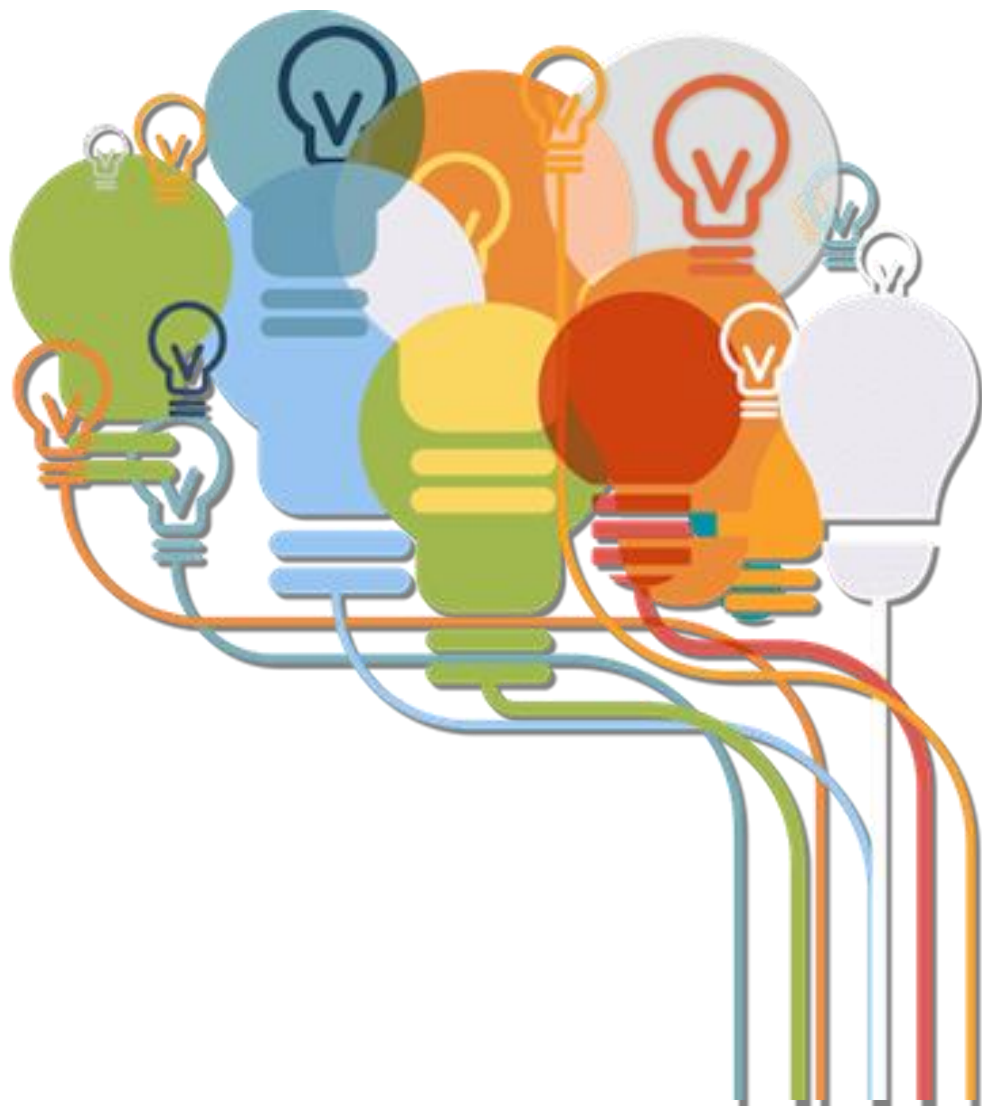


Skills development in SMEs for smart specialization, industrial transition and entrepreneurship (De minimis Aid)

Smart Specialization Strategy of Bucharest-Ilfov Region 2021-2027 (RIS3 BI)

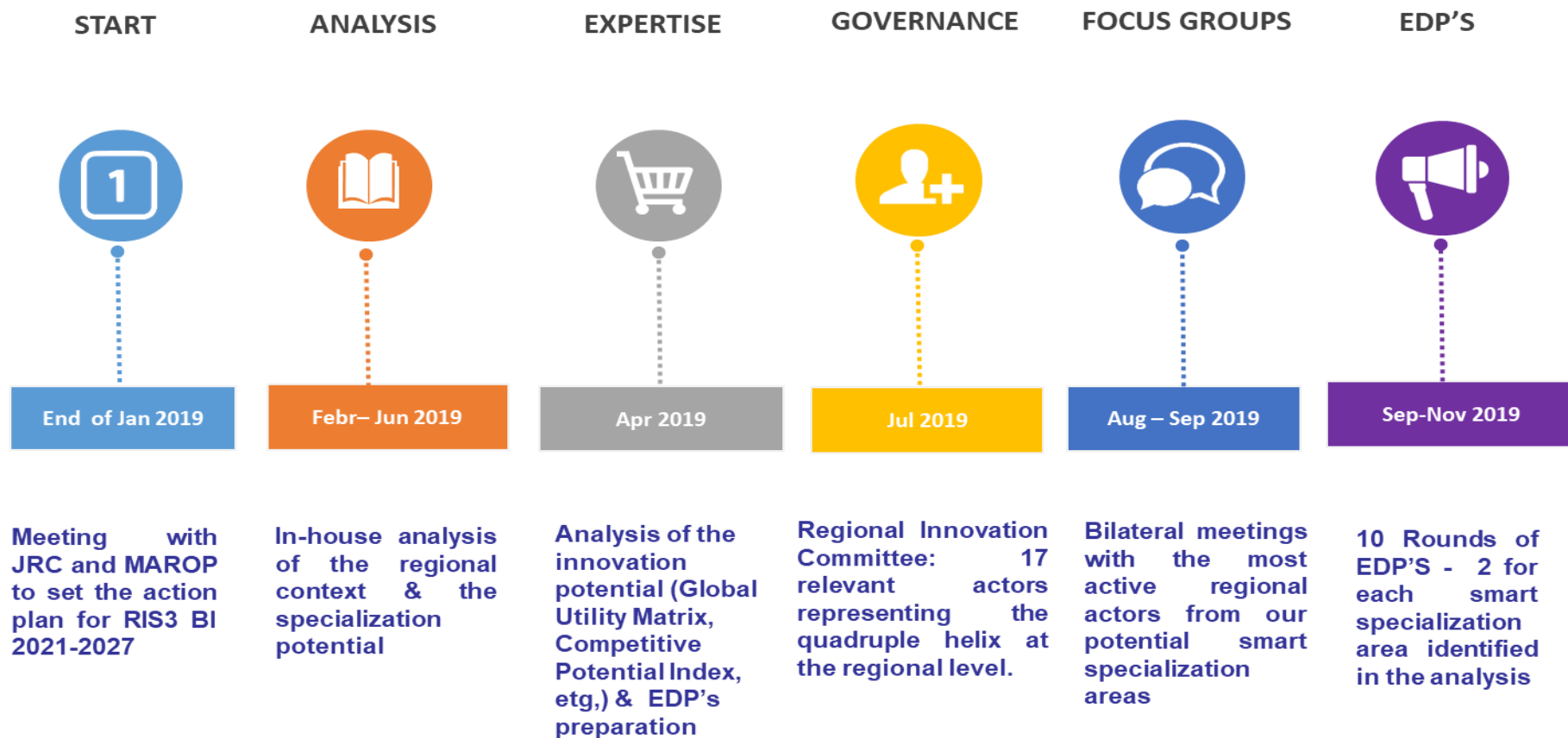
All the interventions from ROP BI 2021-2027 - Priority 1 must be consistent with the RIS3 BI 2021-2027 - It's a thematic enabling condition applicable to all specific objectives under Policy objective 1 - A smarter Europe by promoting innovative and smart economic transformation.

All the interventions from ROP BI 2021-2027 - Priority 1 will be funded only for the regional areas of smart specialization. (Role of national strategy to be discussed further)



Smart Specialization Strategy of Bucharest-Ilfov Region 2021-2027 (RIS3 BI)

Timeline



February - March 2020 - Call for project ideas in order to outline the final priorities/ smart specialization niches/ project portfolio of RIS3 BI 2021-2027

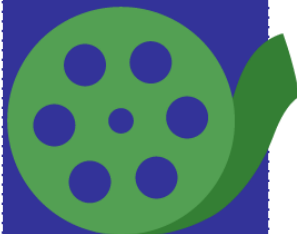
Areas of Smart Specialization

RIS3 BI 2021-2027



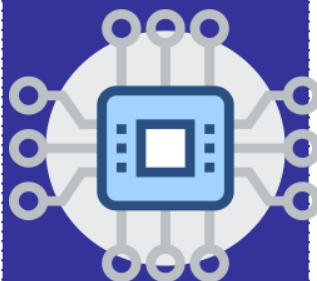
ICT

(cyber security, big data, AI, IoT, automation, robotics, etc.)



Cultural and creative industries

(gaming, educational games for children, film therapy, VR / AR in education & culture, interactive documentaries, etc.)



Intelligent systems and components

(electronics, optoelectronics, mechatronics, etc.)



Advanced materials

(smart labels & textiles, smart packaging, metallic, non-ferrous, composite, polymeric materials, 3D printing materials, etc.)



New foods & food safety

(healthy foods, functional foods with special nutritional purpose, food sensors for freshness, food traceability, etc.)



Health

Next Steps

- **October 2020 - March 2021** - Further improvement of the ROP through public consultation, working groups, EC comments/decisions
- **January 2021** - Finalizing the RIS3 BI 2021-2027
- **February - June 2021** - Elaboration on funding rules (guidelines) and consultation process on these
- **By June - July 2021** - Building up the new implementation structure— Managing Authority (structure/HR/working instruments).

Essentials:

- Stronger involvement of local actors (public & private), establishing good governance mechanisms at regional level
- Clear national legal framework regarding future period
- Availability of assistance from national level for capacity building of the MA

THANK YOU FOR YOUR ATTENTION!

163 M. Eminescu Street, Bucharest, Romania

Phone /Fax: +4 021.315.96.59; +4021.315.96.65

Phone helpdesk: + 4021.313.80.99

www.adrbi.ro

Email: contact@adrbi.ro



Agenția pentru Dezvoltare Regională
București - Ilfov